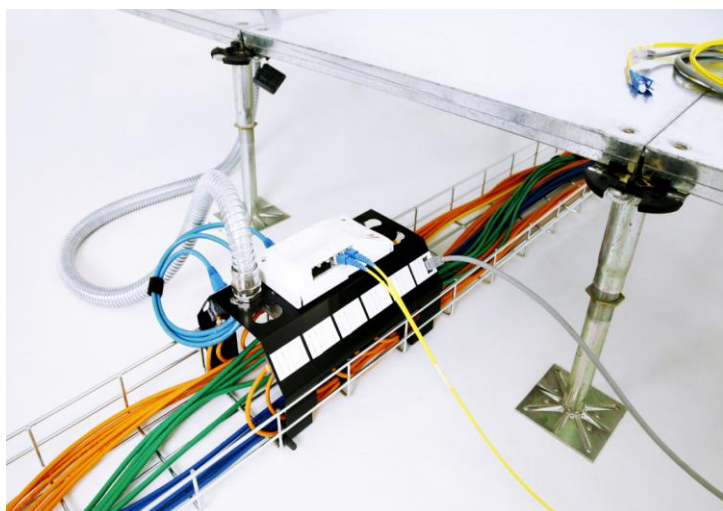


THE NEXT GENERATION, XERO-SPACE FLEXIBLE PATCH SOLUTION

Product Overview

At X Space we know the importance of optimising data centre space, and therefore the successful management of a large number of cables is crucial when addressing this issue. To address this demand for efficiency X Space have designed a flexible patching system to accept a wide range of LJ6C snap-in connectors from Cat 5e – Cat 7A, to deliver a Hi-density cable management solution to meet the needs of installers and the end users



Key Benefits

- Utilises and enhances the free space on Steel Wire Cable Tray
- Cable bend radius uncompromised during installation
- Speed of installation
- “Plug & Play” solution allows for flexibility and ease of moves, adds and changes
- Suitable for mounting upside down - Ideal for Data centres and Co-location environments
- Maximum air flow ventilation
- Compatible with Pod Box applications
- Defined demarcation point between infrastructure and patching field outside the cabinet

Mounting Option

Steel Wire Cable Tray, Galvanised Cable Tray, Cable Matting Systems or Floor/Wall mounting.

TO SUIT:

Marco 150mm w to 600mm w

Cablofil 150mm w to 600mm w

Cabinet Cable Tray 150mm w

Dimensions and Product Specification

Description	Product Code	Dimensions mm	Module Type	Apertures
LJ6C - Xero-space Flexible Patch Solution	PG012	167W x 115H x 258L	LJ6C	12 x LJ6C Snap-in Connectors .1x 2 Gang cut-out, 4x20/25mm Mounting slots

Technical Drawings

Material: 1.2mm Zintec Steel
Finish: Powder Coated - Black
Panel Weight: 0.7Kg
DRAWING No: 2GTBF 10000006

